

# CERTIFICATE OF LOCATION OF GOVERNMENT CORNER

South Quarter Corner of Section 1, Township 107 N., Range 39 W., 5th P.M.

STATE OF MINNESOTA, County of Murray

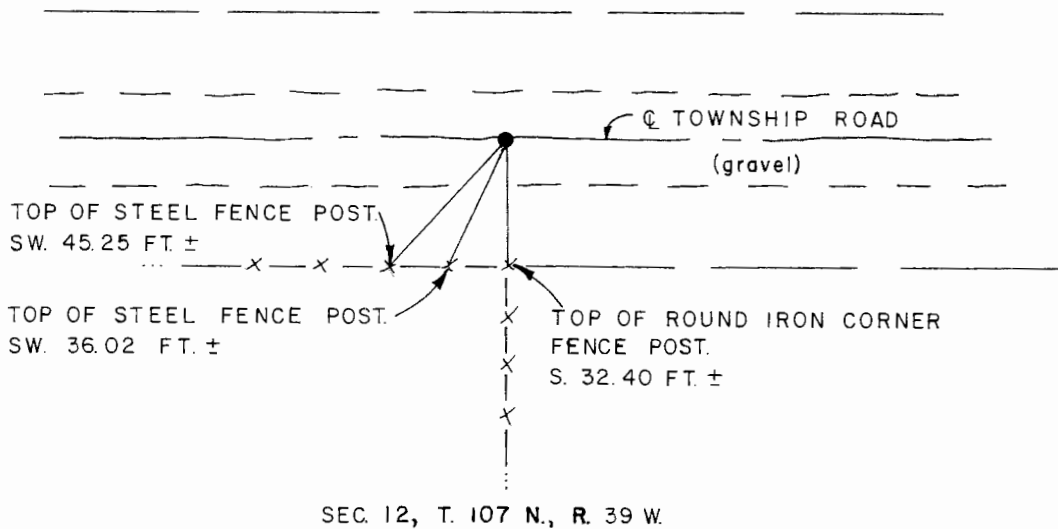
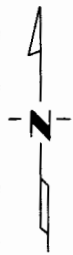
At the corner location shown on the sketch:

- On Aug. 19, 1980 found a rotted hub above field stone 2.0' below grade; stone was on  
DATE  
☉ of Twosp. Rd. & on the fence line extension from the south.
  - left monument as found,  lowered monument,  removed monument (explain)
- On Aug. 19, 1980 placed a 1/2" iron reinforcing bar with "L.S. 12967" cap over the  
DATE  
field stone.

## SKETCH OF REFERENCE TIES

DOVRAY TOWNSHIP

SEC. 1, T. 107 N., R. 39 W.



I hereby certify that this document and the data contained herein was prepared by me or under my direct supervision.

*[Signature]* 12/28/81  
SIGNATURE DATE

Registration No. 12967

- Land Surveyor,  Professional Engineer
- County Surveyor,  County Engineer

OFFICE OF THE COUNTY RECORDER  
 County of Murray

I hereby certify that this document was filed in the Co. Recorders office at 10 A.M. on the 18th day of February A.D., 19 82

County Recorder *[Signature]*

By \_\_\_\_\_, Deputy

DOCUMENT NO. \_\_\_\_\_